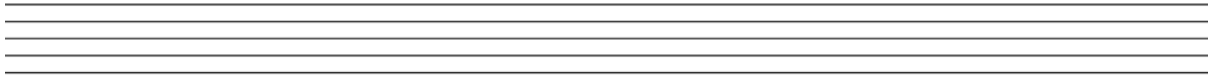


# Worksheet Lesson 1A

## The Stave

(1) How many lines and spaces does a stave have?



5 Lines

4 Spaces

(2) What is a Grand stave?

When the Treble clef and Bass clef are put together, they make a Grand stave.

(3) Complete the sentence by filling in the blanks.

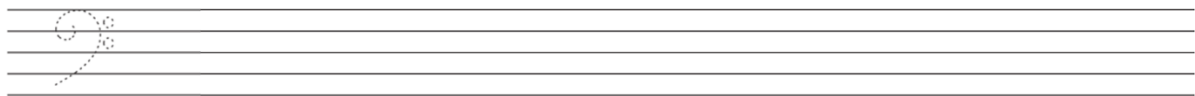


This clef is called a Treble clef



This clef is called a Bass clef

(4) Trace the Bass clef, then draw 5 more by yourself on the staff.



(5) Trace the Treble clef, then draw 5 more by yourself on the staff.

