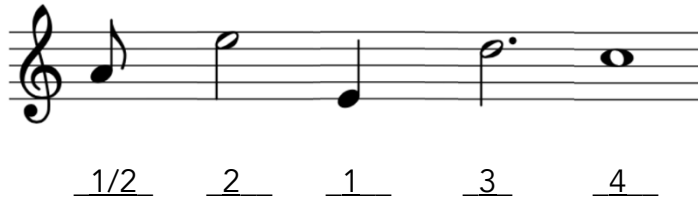


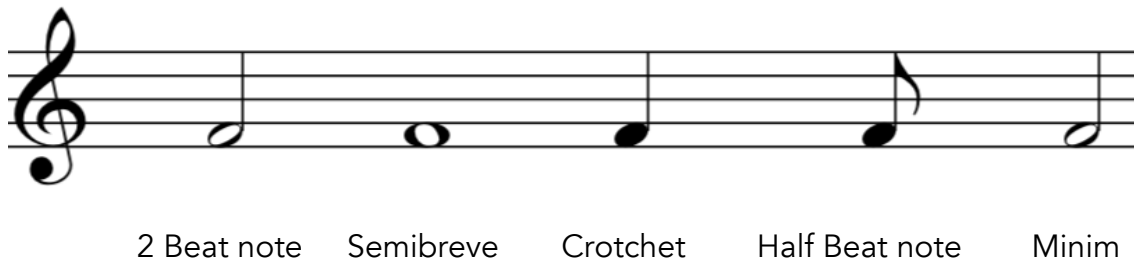
Worksheet Lesson 1C

Note values

(1) Write the note values on the lines: ($\frac{1}{2}$, 1, 2, 3 or 4).



(2) Write the notes following the note value below the staff.



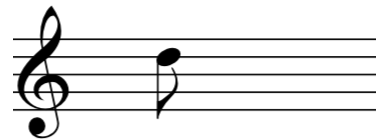
(3) Write the notes using the correct note and clef, below is an example completed for you.



F in the Treble Clef using a Semibreve



A in the Bass Clef using a Minim



D in the Treble Clef using a Quaver



C in the Treble Clef using a Crotchet



F in the Bass Clef using a Semibreve