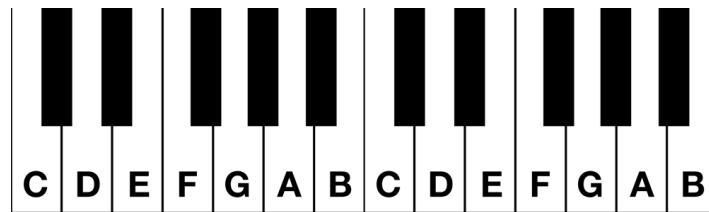


# Worksheet Lesson 3B

## Tones and Semitones

Complete the following by writing whether the two notes in each bar are a semitone apart or a tone apart. Write 'T' for Tone, and 'S' for Semitone.

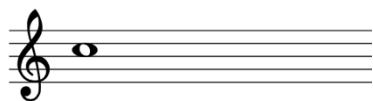


\_\_\_\_\_

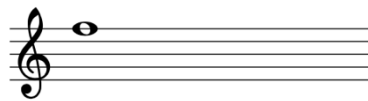


\_\_\_\_\_

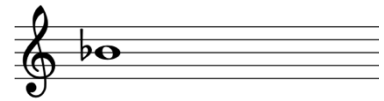
Write a note either a tone or semitone **higher** than the following notes.



Tone Higher



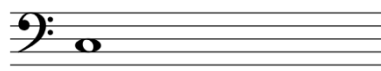
Semitone Higher



Tone Higher



Semitone Higher

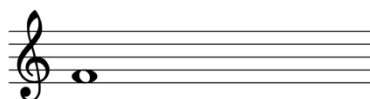


Tone Higher

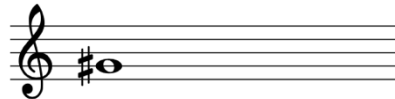


Tone Higher

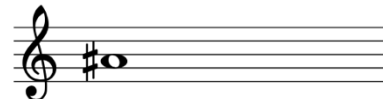
Write a note either a tone or semitone **lower** than the following notes.



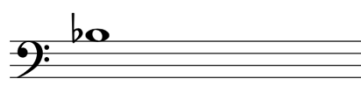
Semitone Lower



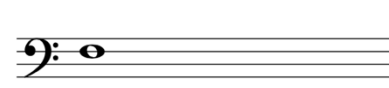
Semitone Lower



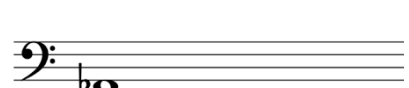
Tone Lower



Semitone Lower



Tone Lower



Tone Lower